

NOTES

EXIST. SUPERSTRUCTURE: Queen Post Truss
 Timber 3" Transverse plank and 2" Long Plank all in
 poor condition.
EXIST. SUBSTRUCTURE: Stone Filled Log Cribbs Poor
 Condition
FOUNDATION: Very Soft Mud on top of Blue Clay.
 Sound Sta. 6+75 Left 12" Rod Penetration very easy
 First 20' into Stream Bed and Then 20' into Firmer
 Material To Elev. -8.1
STREAM: Water Same Elev. As Rangeley Lakes-Water
 Controlled. Extreme High Water 11 Elev. 41.0. Normal Level
 of Lakes During Summer Elev. 38.5. Extreme Low Water
 11 Elev. 34.0 Usually During Late Winter.

APPROACHES: Surface Treated Gravel.
DETOUR: Available. There is considerable
 Traffic During The Summer Season.

H. P. SMITH
 Woods

J. B. COTELL
 Pasture

J. B. COTELL
 Pasture

ORA MALEY
 Pasture

PLAN Scale: 1 inch = 30 feet

PROFILE

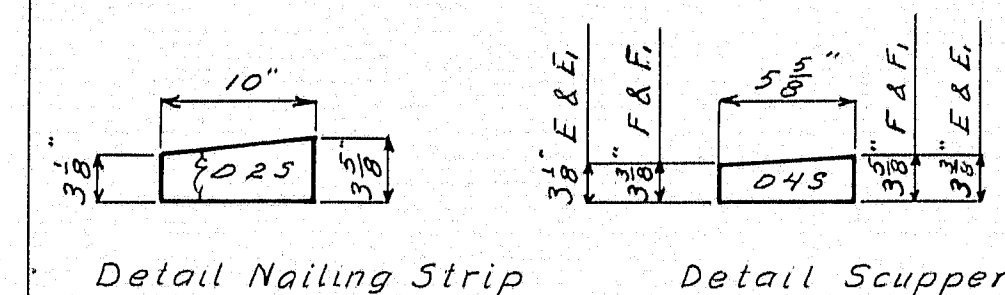
Scale 1 inch = 5' Vert and 30' Hor.

Survey by Blake
 Plotted & Traced Horan
 Town 04-22
 Bridge 2384
 STATE HIGHWAY COMMISSION
 BRIDGE DIVISION
HUNTER COVE BRIDGE
 Over
HUNTER COVE
 IN THE TOWN OF
RANGELEY
FRANKLIN COUNTY
 SURVEY
 Sheet 1 of 5 Augusta, Maine April 1940

39-180

0 1 2 3 4 5 INCHES

② Oak. All other timber to be pressure treated according to Maine State Highway Commission specifications of May, 1940. Pieces \uparrow shall be treated with creosote oil, full cell process, 12" retention.



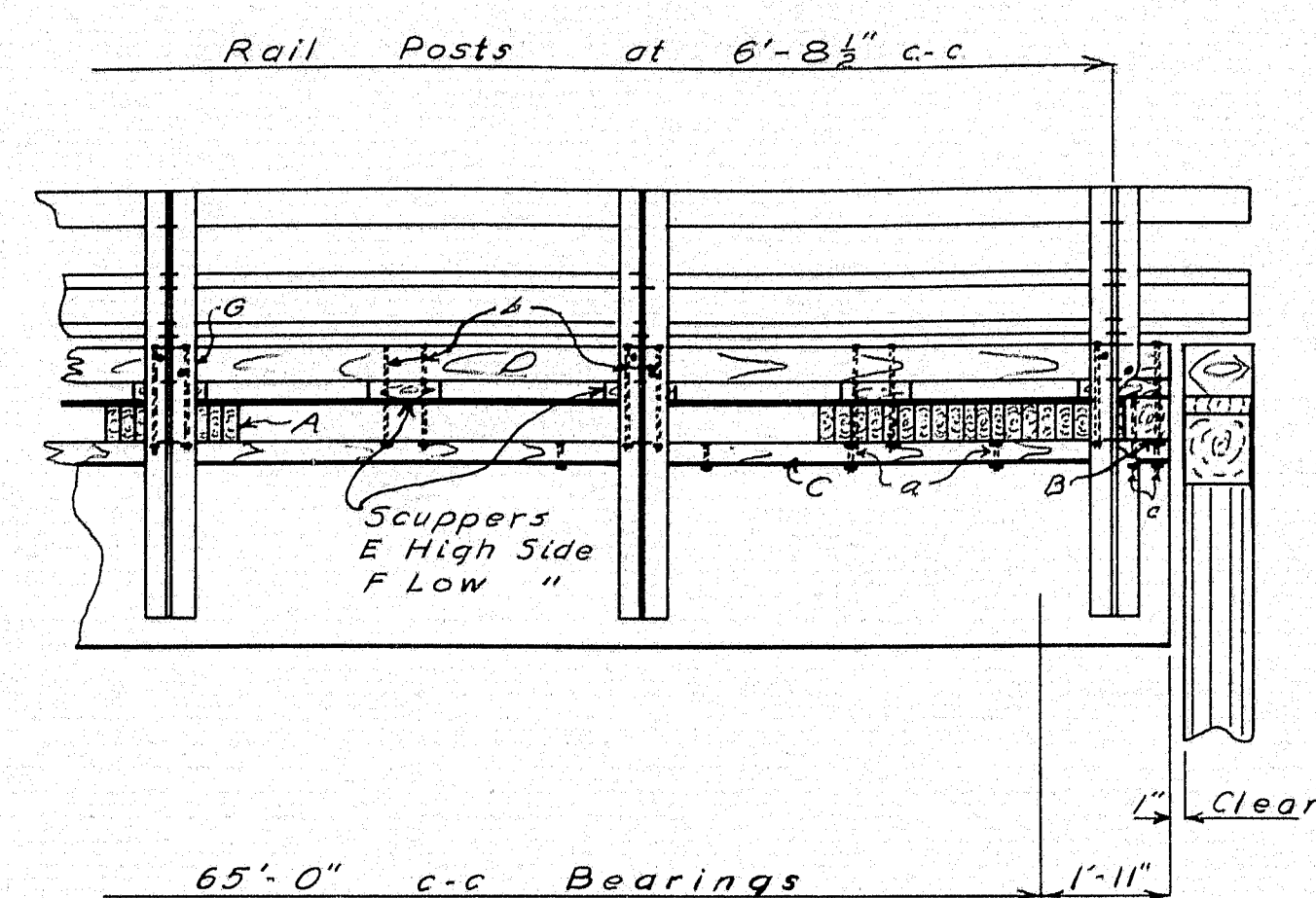
Hardware			Schedule			
Mark	Size	No.	Length	Kind	Washers	Location
a	$\frac{3}{8}$ "	155	0-3	Carriage	None	Nailing Strip
b	$\frac{3}{8}$ "	84	1'-6"	"	84 Cast	Curb - Floor
c	$\frac{3}{8}$ "	40	1'-0"	"	None	End Timber
d	$\frac{3}{8}$ "	44	0'-10"	"	"	Curb-Rail Pos.
e	$\frac{3}{8}$ "	24	1'-10"	Machine	40 Cast	Bracing
f	$\frac{3}{8}$ "	20	1'-7"	"	108 "	"
g	$\frac{3}{8}$ "	2	2'-0"	Drift Pa	"	Caps
h	$\frac{3}{8}$ "	3	1'-6"	"	"	Curbs (M)
	1"	20	0'-10"	Log Screw	20 Cut	Beams-Caps

*All Hardware, except drift pins, to be galvanized.
Exact length of "e" and "f" to be determined in the
field.*

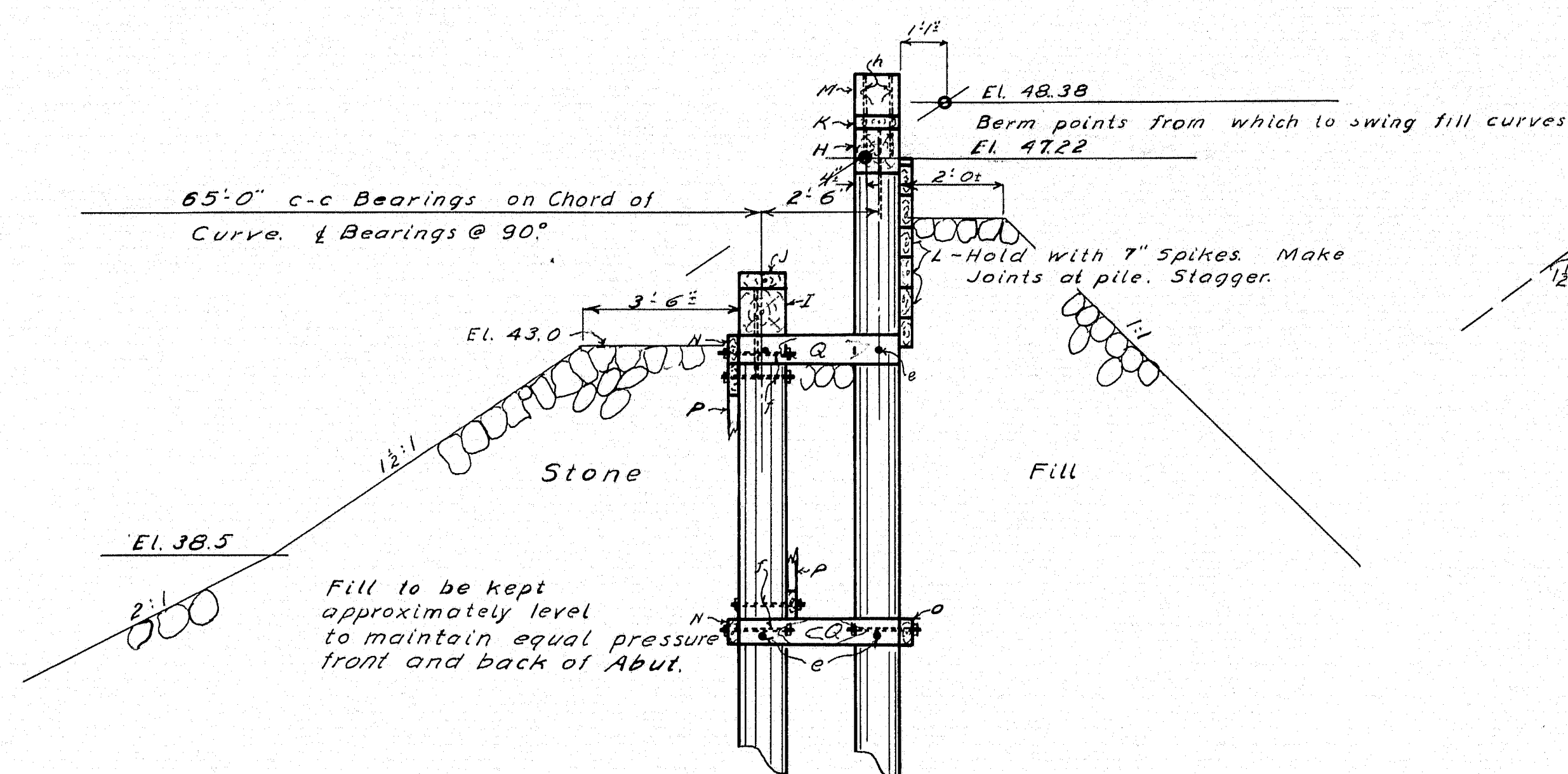
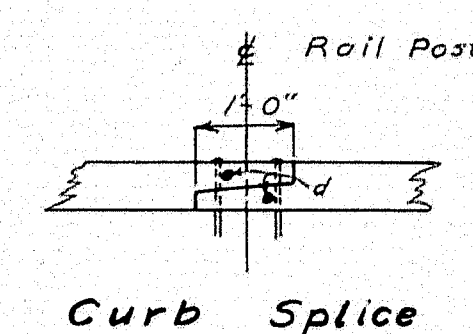
Also Required:

1690 Sq. Ft. 1" Mineral Surfaced Asphalt Plank.

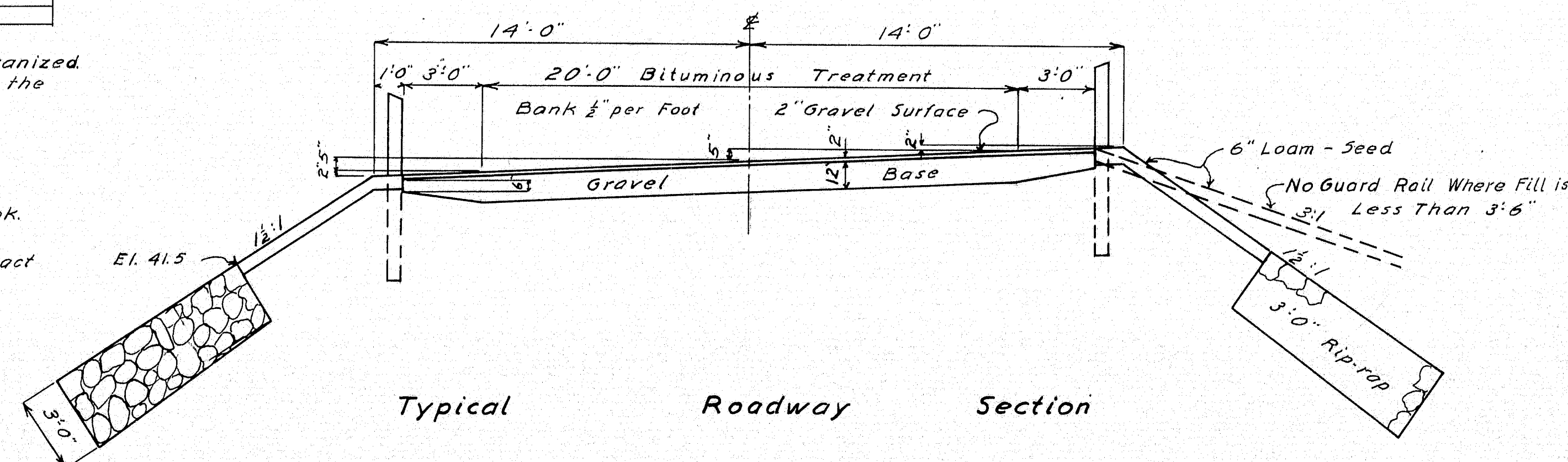
24-55 foot, pressure treated, wood piles. Exact length to be determined in the field.



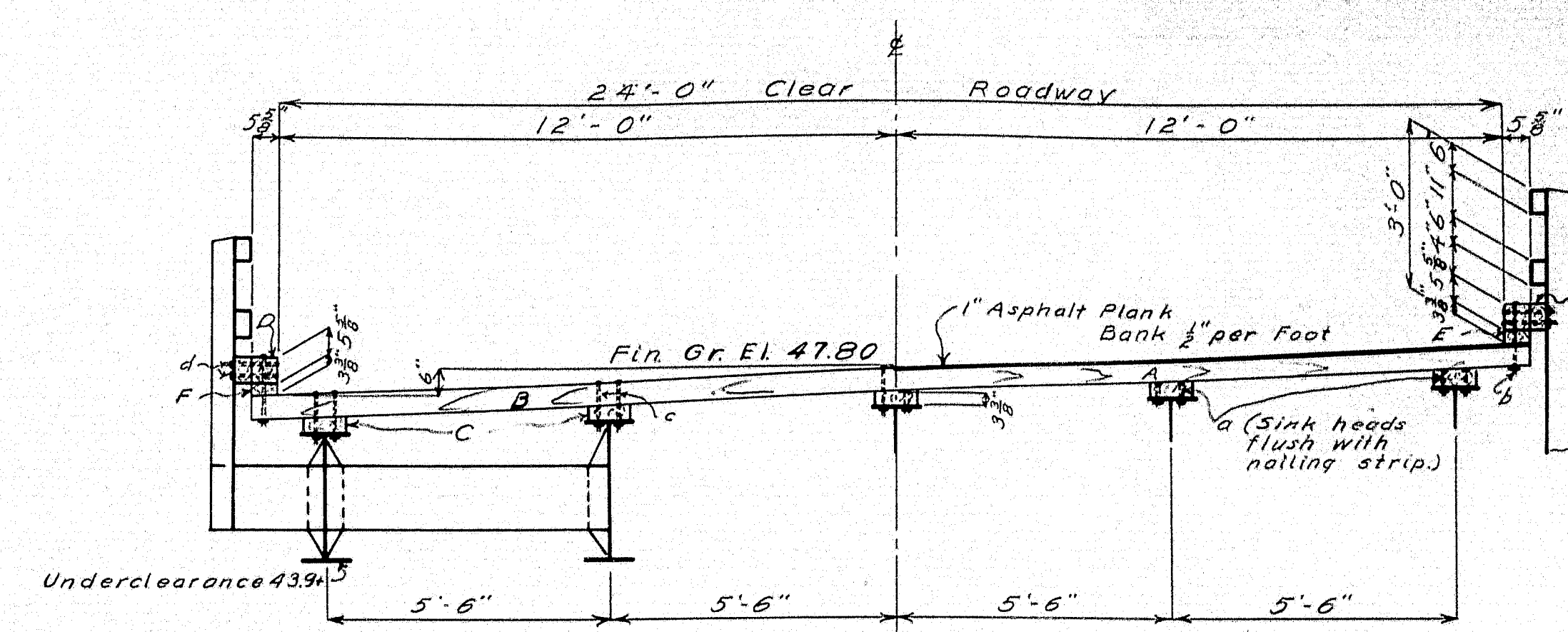
Part Side View



Section A-A

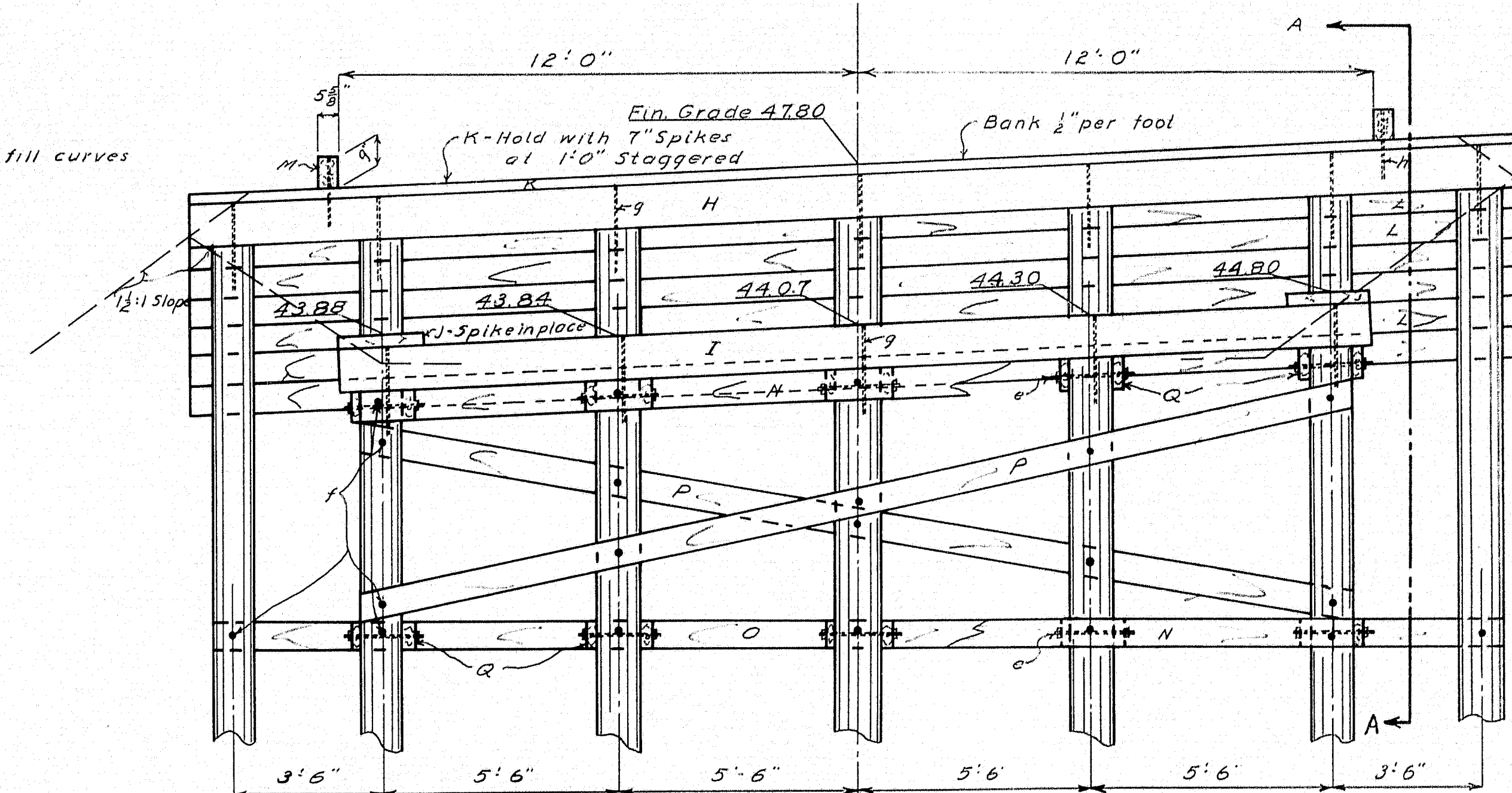


Typical Roadway Section



Half End View

Half Transverse Section



Face Abutment No. 2
(Abutment No. 1 Opposite Hand)

PLAN: <i>CUB</i>	TOWN <i>04-22</i>
CHECKED: <i>SW</i>	BRIDGE <i>2384</i>

STATE HIGHWAY COMMISSION
 BRIDGE DIVISION

HUNTER COVE BRIDGE

OVER

HUNTER COVE

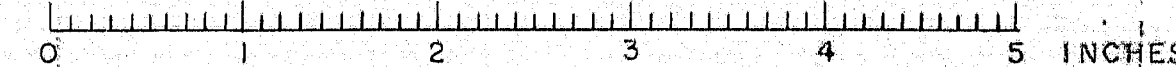
IN THE TOWN OF

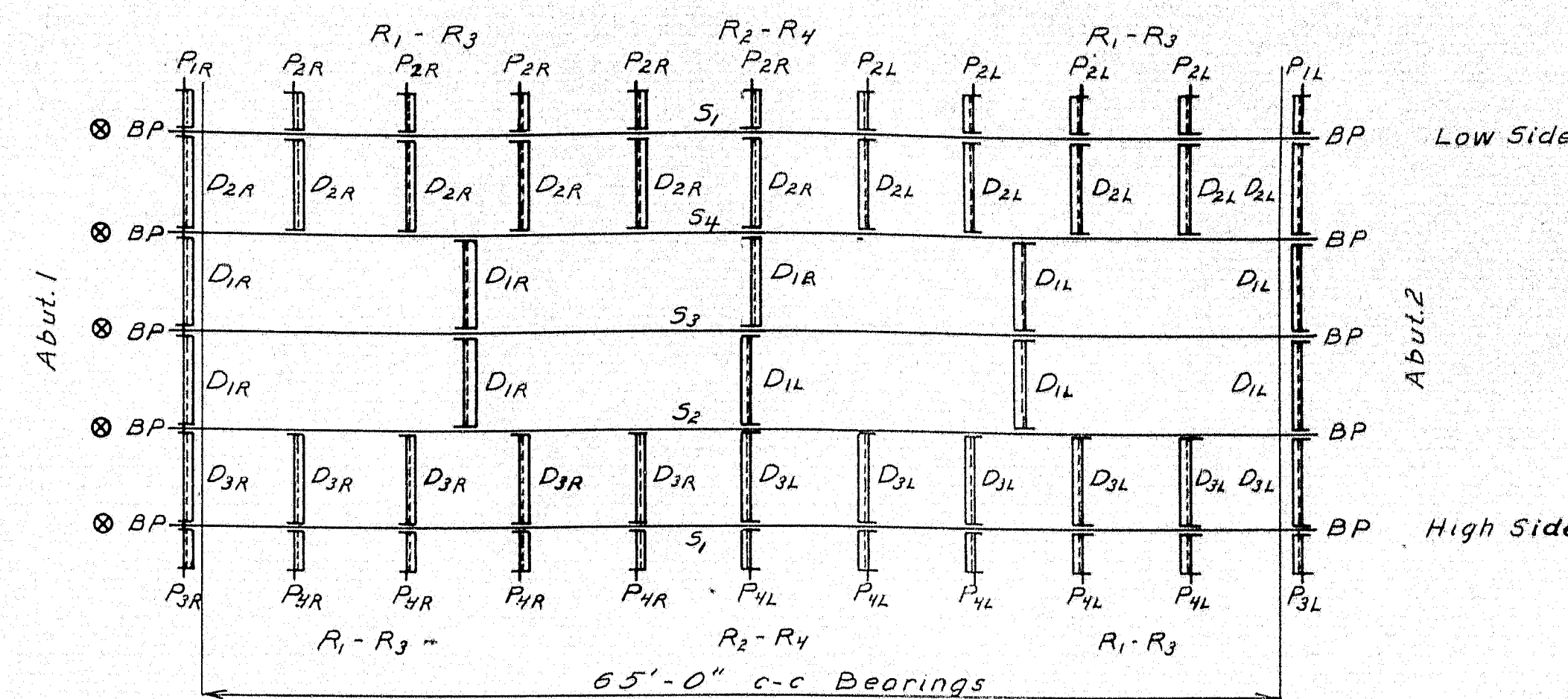
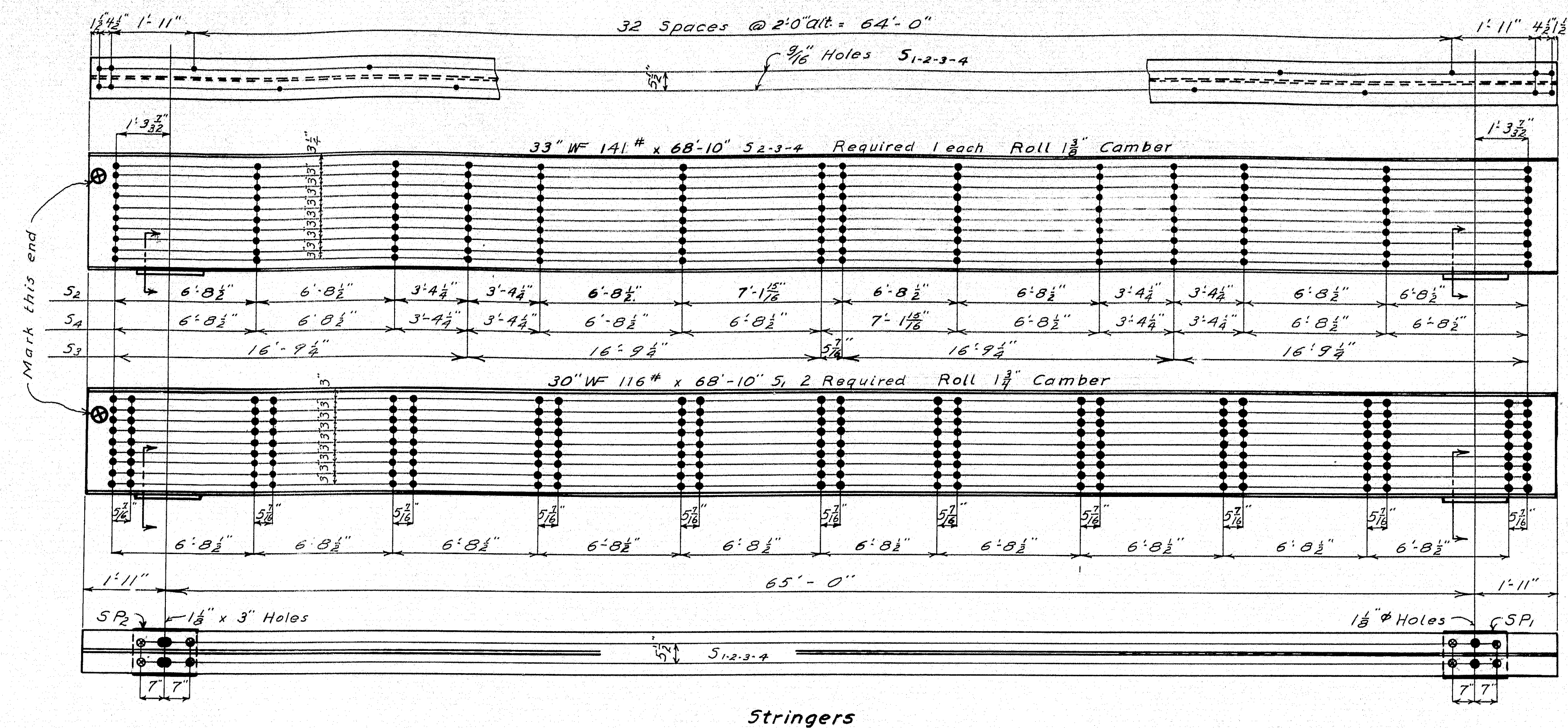
RANGELEY

FRANKLIN COUNTY

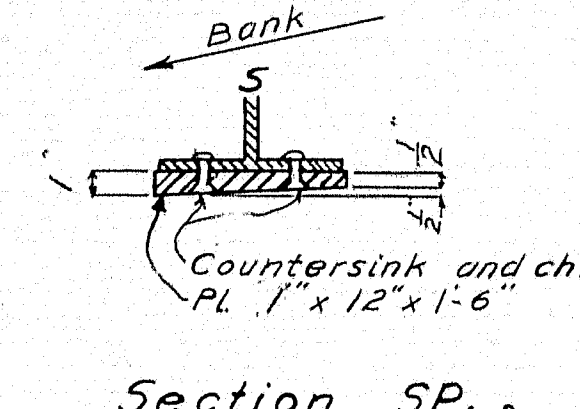
Floor & Abutment Details

SHEET 2 OF 5 AUGUSTA, ME. JUNE, 1940

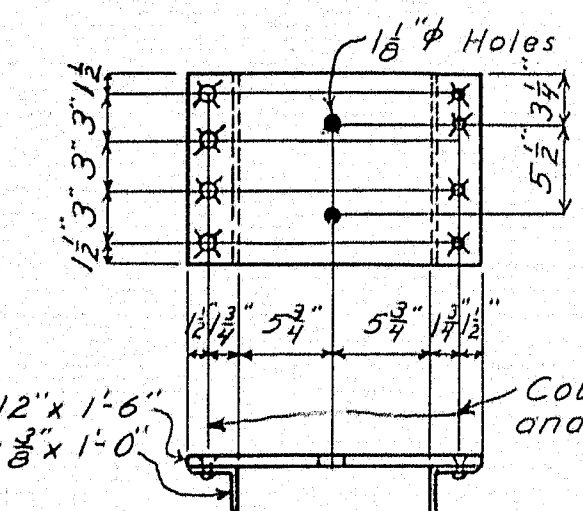




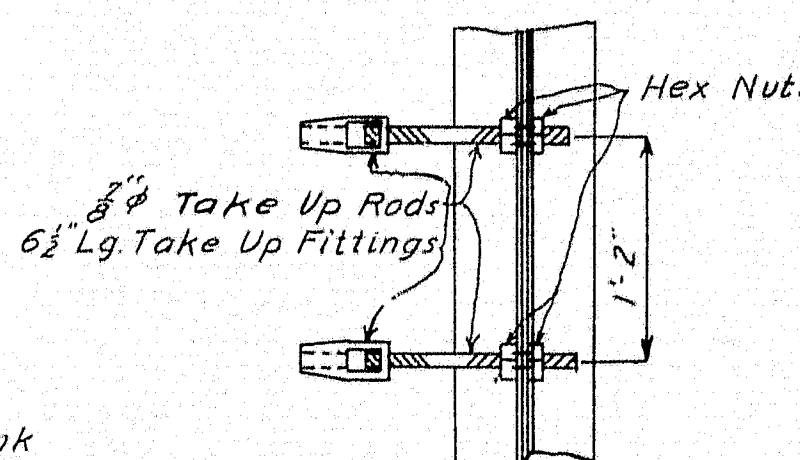
Erection Diagram



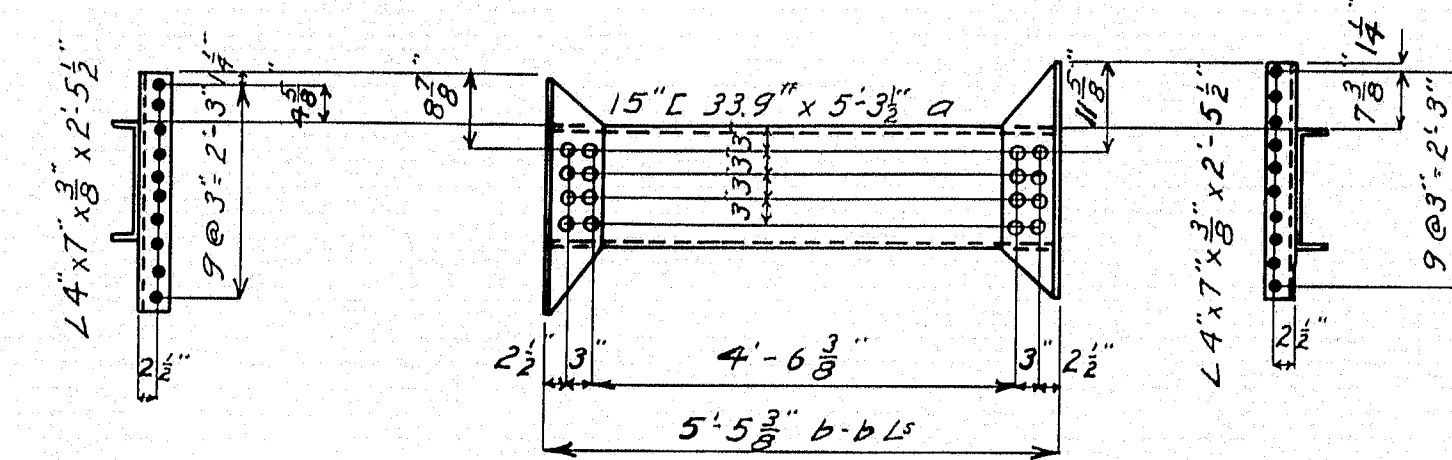
Section SP1-2



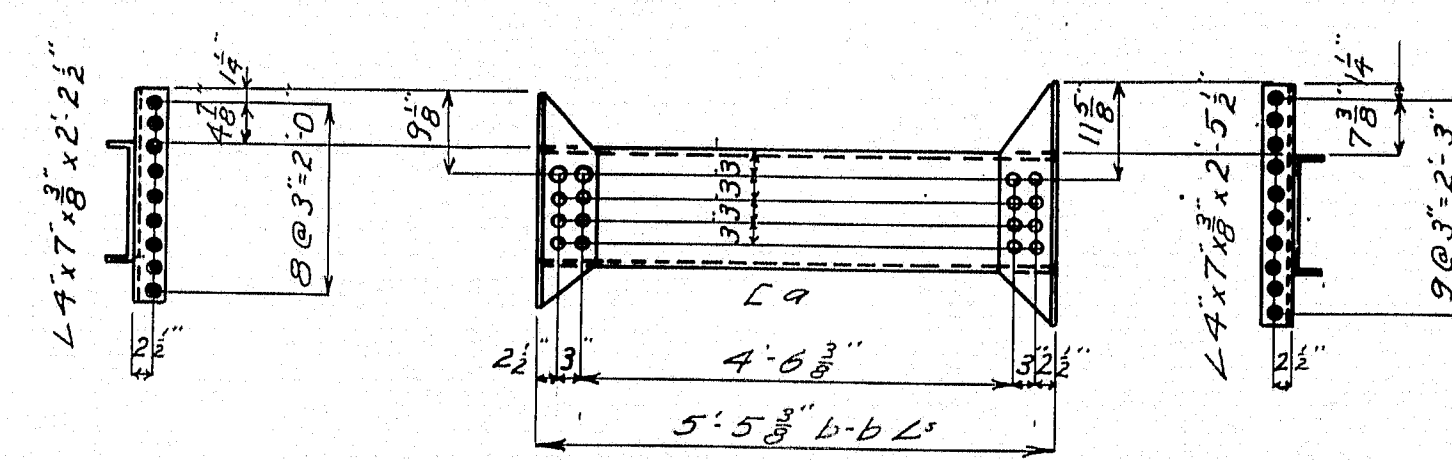
Bearing Plate BP
10 Required



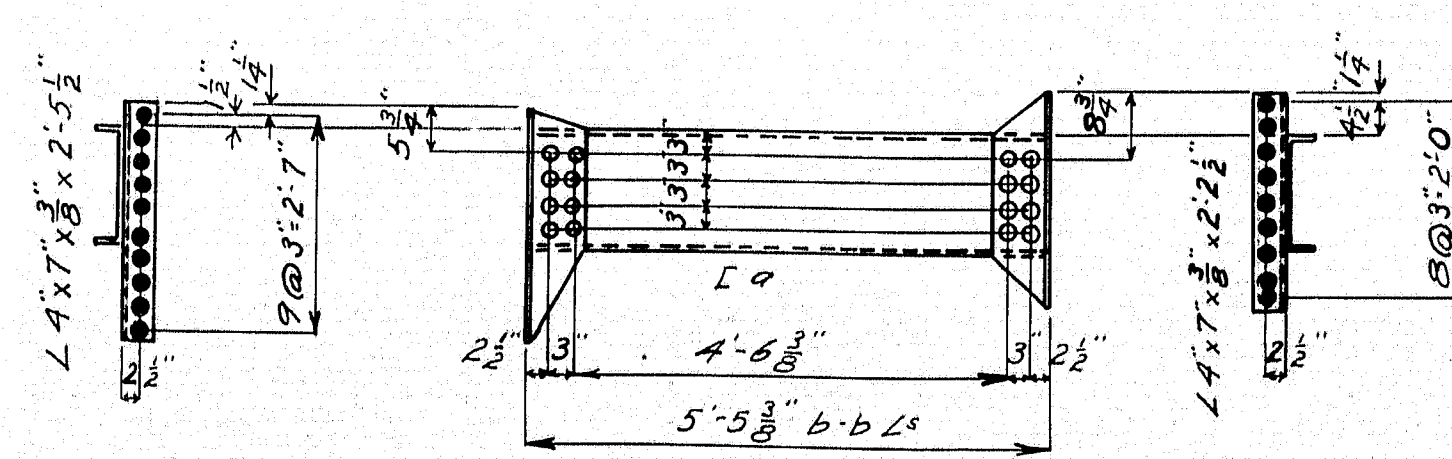
Cable Rail Anchor
(Item 30)



D1
5 Required
D1' Opposite Hand 5 Req'd

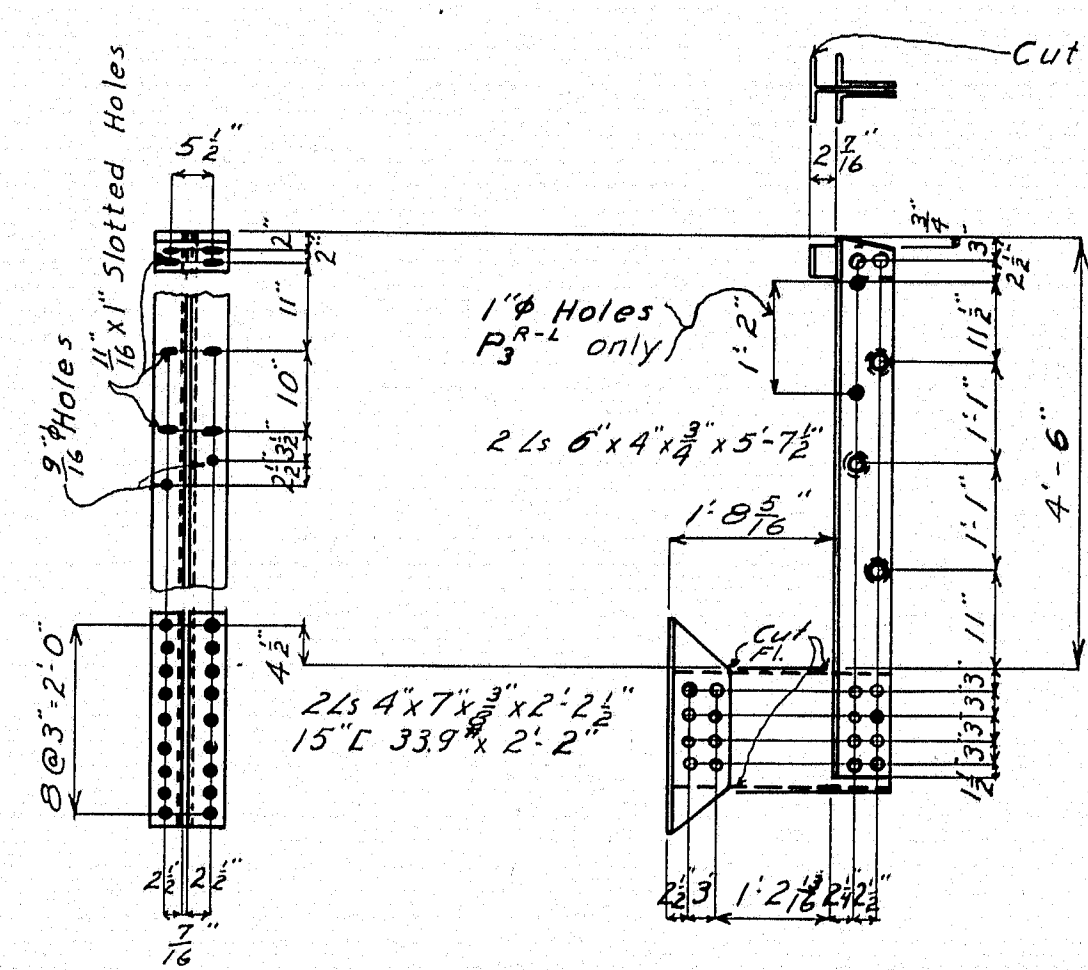


D2
6 Required
D2' Opposite Hand 5 Req'd



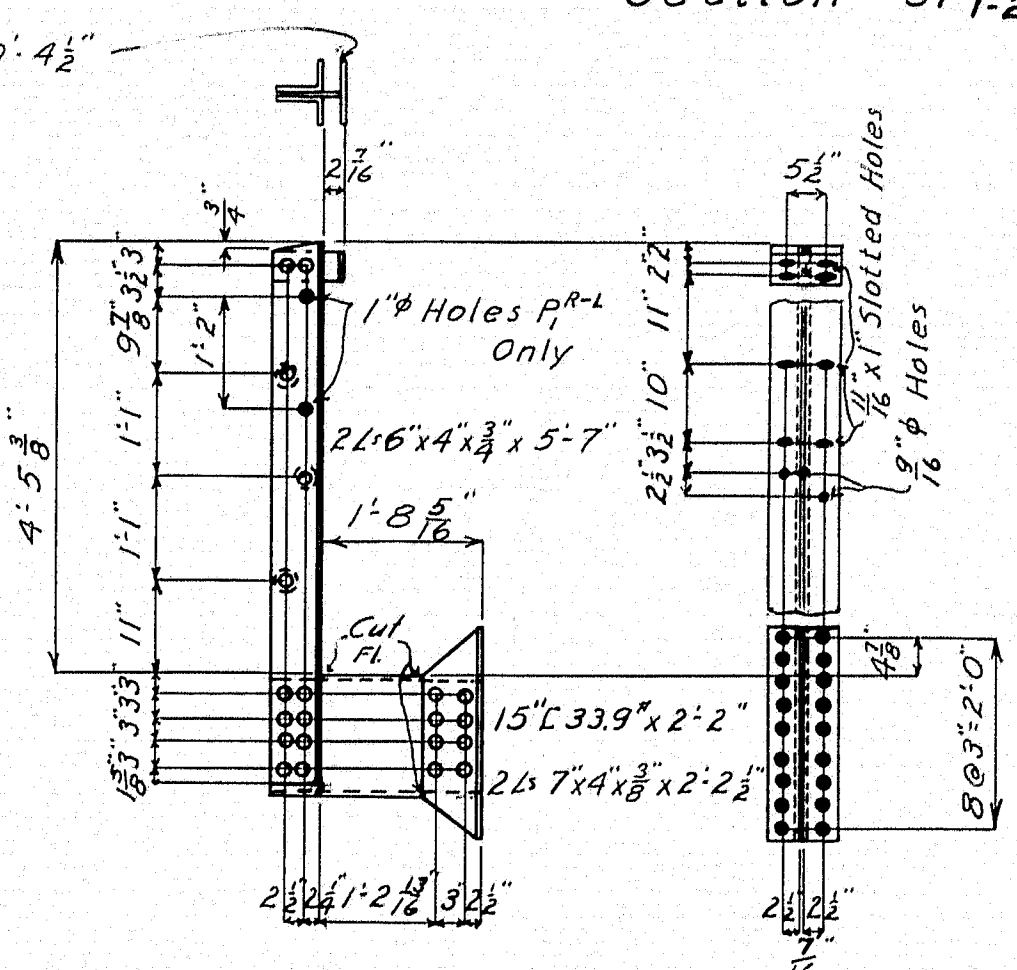
D3
5 Required
D3' Opposite Hand 6 Req'd

Diaphragms



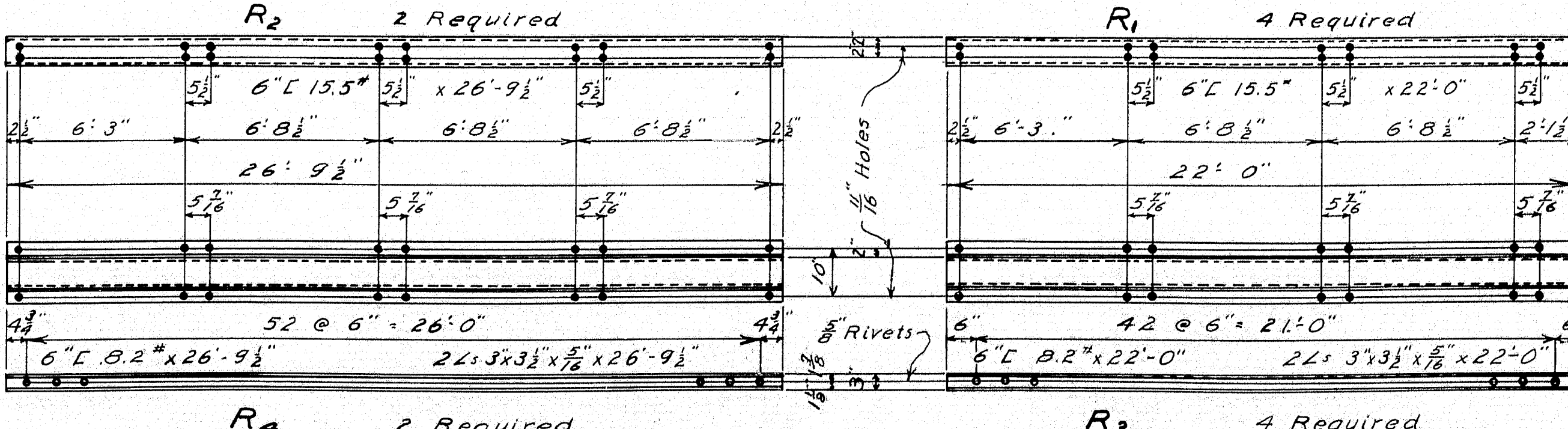
R1 - R4 : R1' - R4' Opposite Hand
1 4 1 5 Required

Rail



P1 - P2 : P1' - P2' Opposite Hand
1 5 1 4 Required

Posts



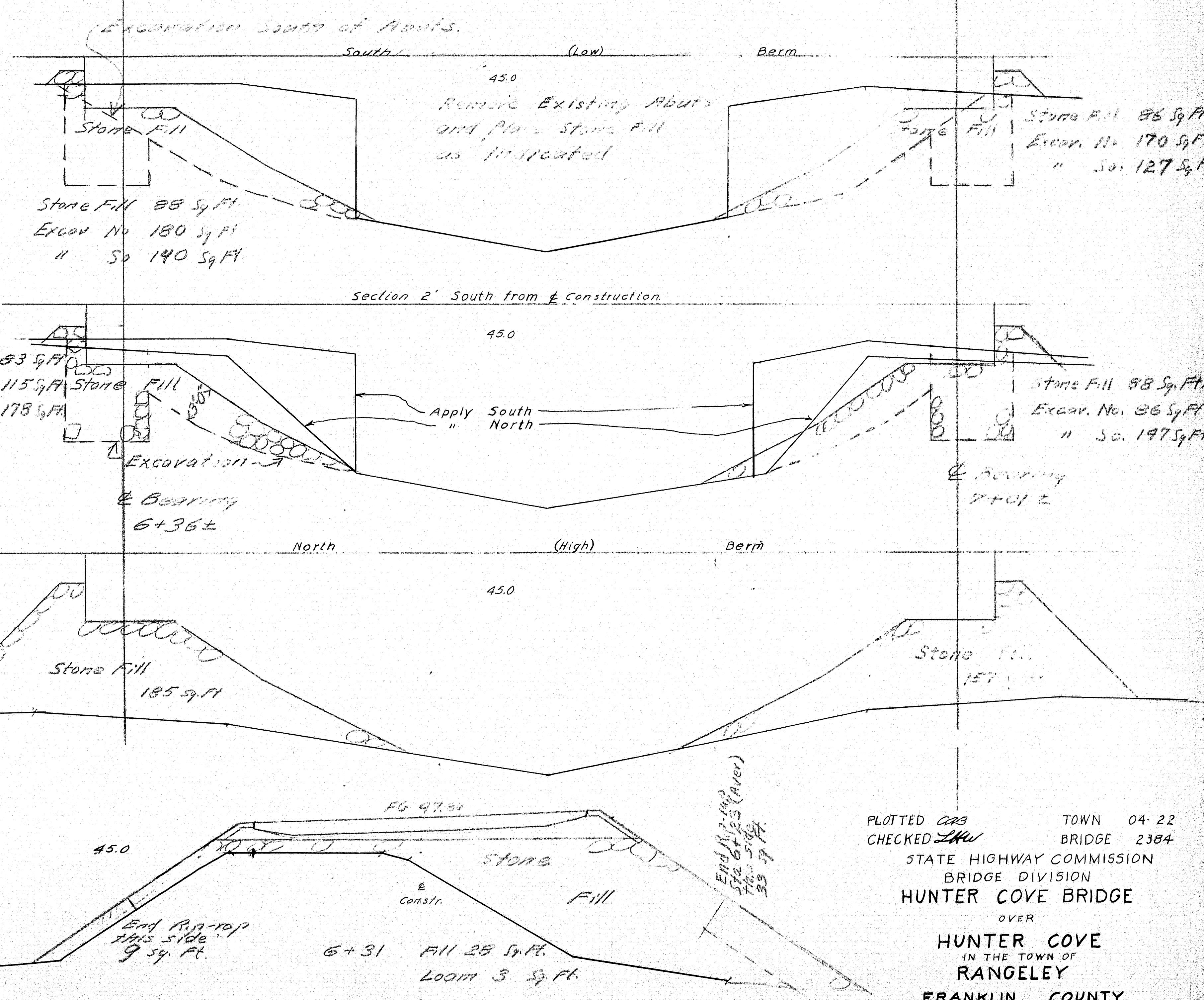
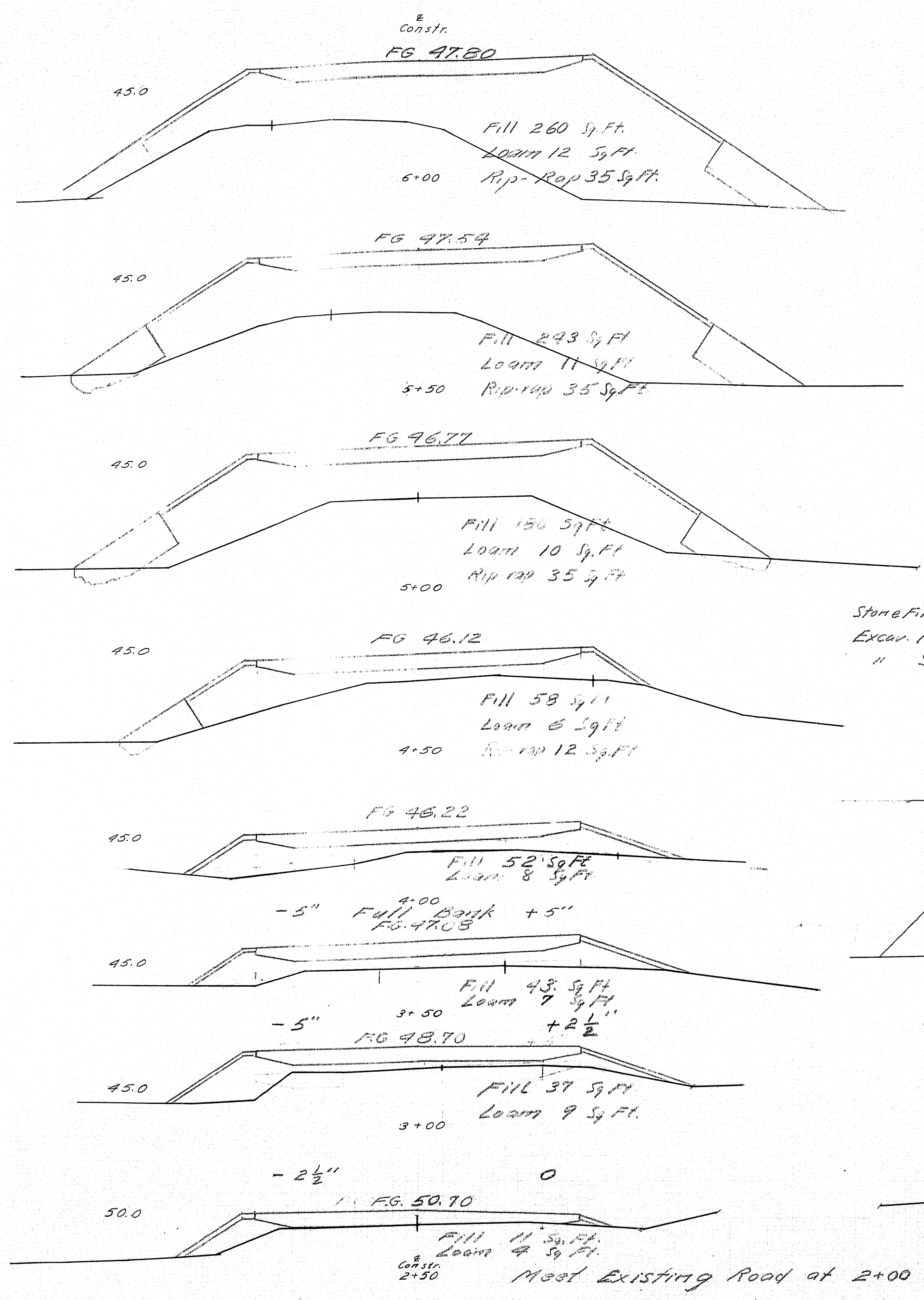
Rail

Bars

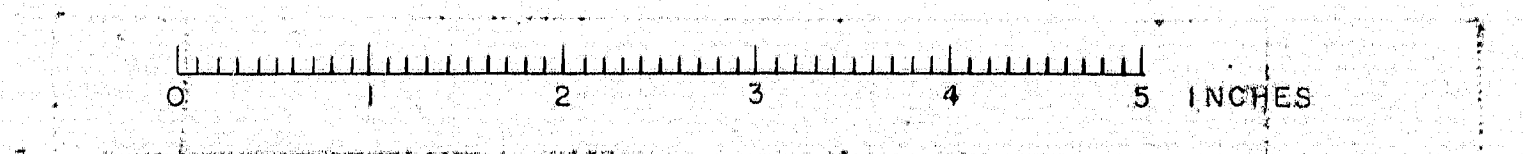
Bolt		Schedule		
Size	No	Kind	Length	Washers
3/4"	88	Machine	2"	BB Cut
3/4"	88	"	2 1/2"	BB "
3/4"	420	"	2"	"
3/4"	300	"	2 1/2"	"

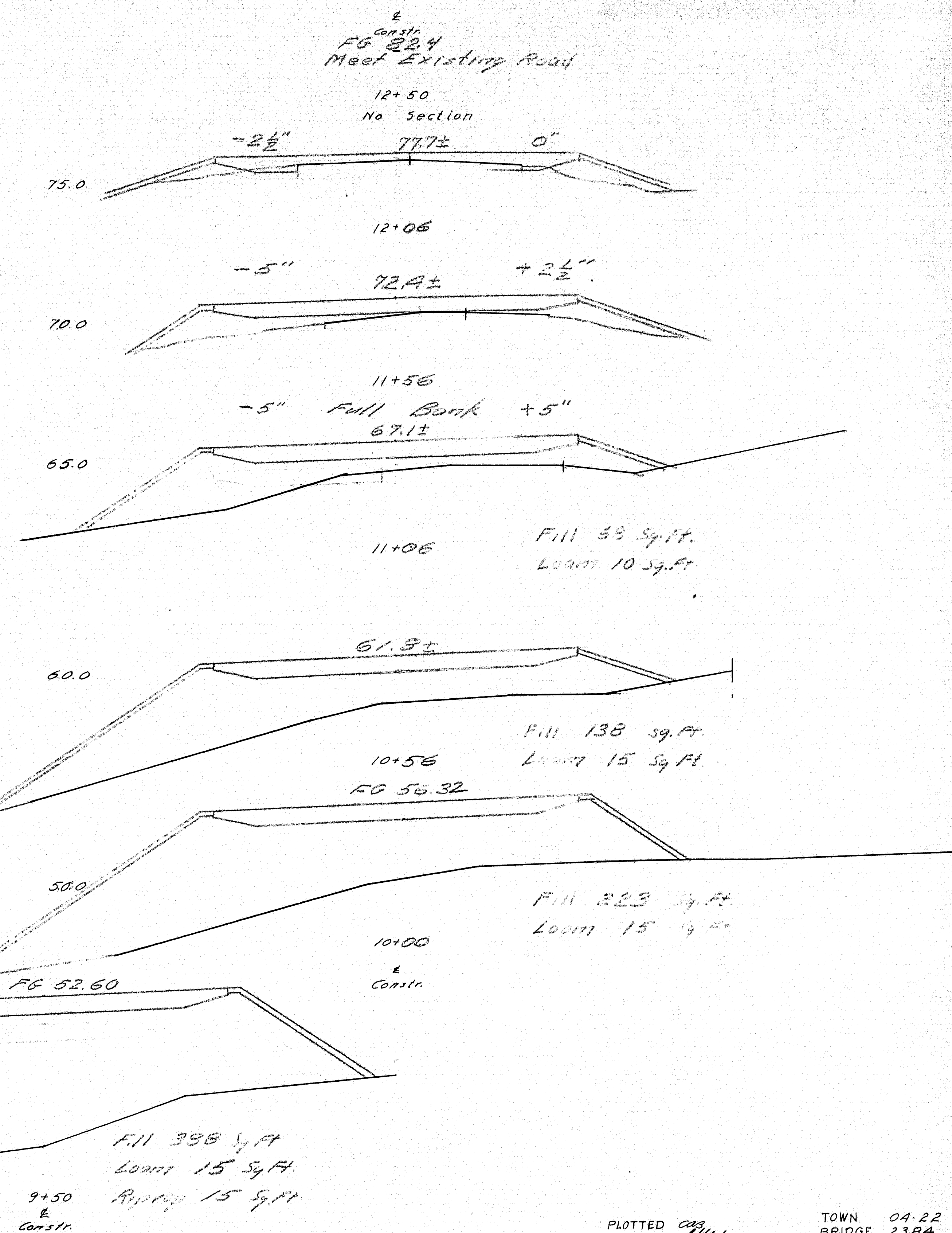
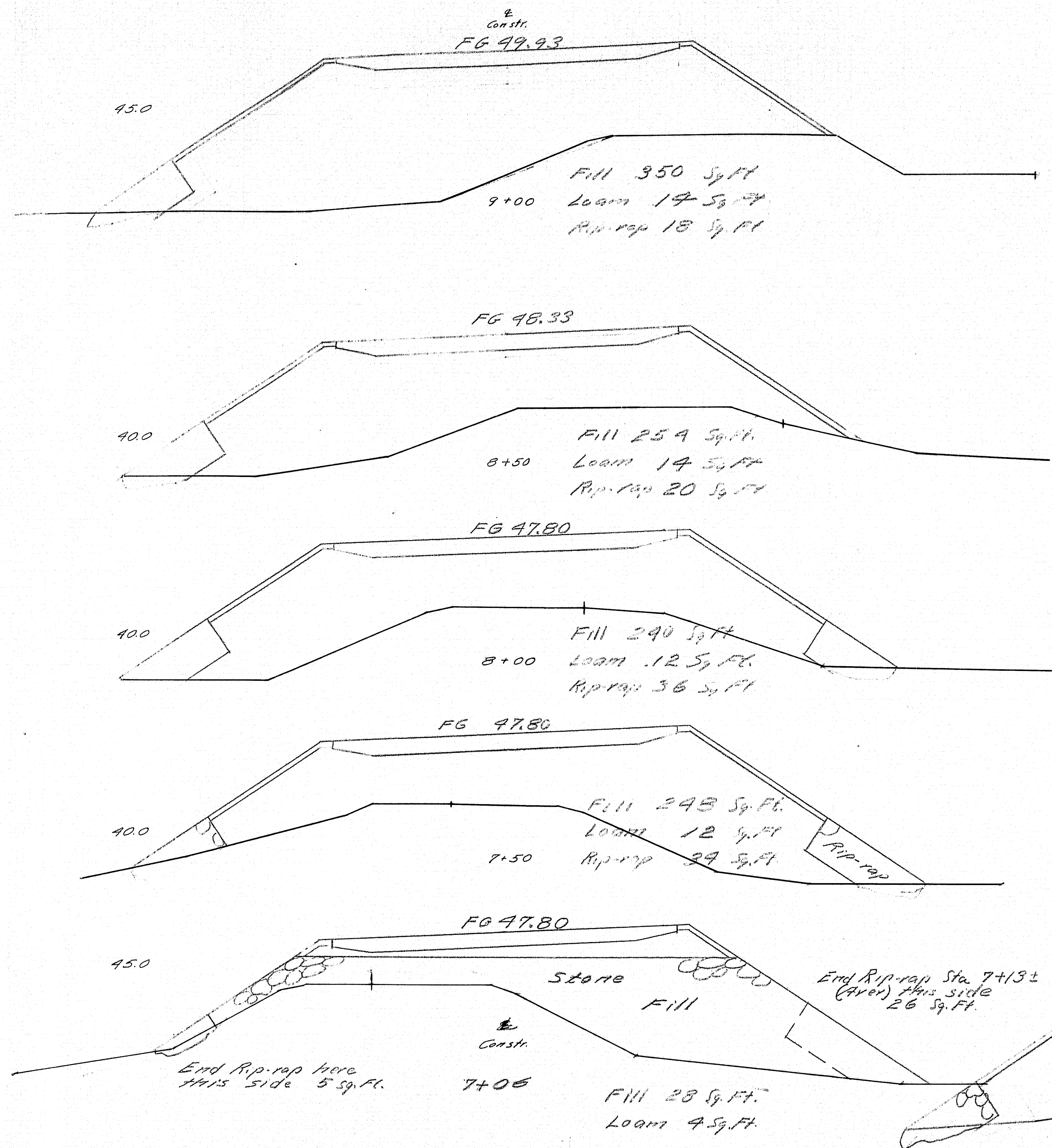
Notes: H-15 Loading. $f_s = 18,000$ lbs
Maine State Highway Commission Specifications for Steel Highway Bridges, 1937.
Shop connections riveted. 3/4" Rivets, except as noted
Field connections bolted. All bolts American Bridge Co. or U.S. Standard with Hex nuts and heads.
Holes 1/8", except as noted.

PLAN	Co. 3	TOWN	04-22
CHECKED	244	BRIDGE	2384
STATE HIGHWAY COMMISSION BRIDGE DIVISION			
HUNTER COVE BRIDGE			
OVER			
HUNTER COVE			
IN THE TOWN OF			
RANGELEY			
FRANKLIN COUNTY			
Steel Details			
SHEET 3 OF 5 AUGUSTA, ME. JUNE, 1940			



PLOTTED *CAB* TOWN 04-22
CHECKED *LMW* BRIDGE 2384
STATE HIGHWAY COMMISSION
BRIDGE DIVISION
HUNTER COVE BRIDGE
OVER
HUNTER COVE
IN THE TOWN OF
RANGELEY
FRANKLIN COUNTY
X-SECTIONS
SHEET 4 OF 5 AUGUSTA, ME. JUNE, 1940





PLOTTED *cas*
 CHECKED *LHW*
 TOWN 04-22
 BRIDGE 2384
 STATE HIGHWAY COMMISSION
 BRIDGE DIVISION
 HUNTER COVE BRIDGE
 OVER
 HUNTER COVE
 IN THE TOWN OF
 RANGELEY
 FRANKLIN COUNTY
 X-SECTIONS
 SHEET 5 OF 5 AUGUSTA, ME. JUNE, 1940

39-184

0 1 2 3 4 5 INCHES